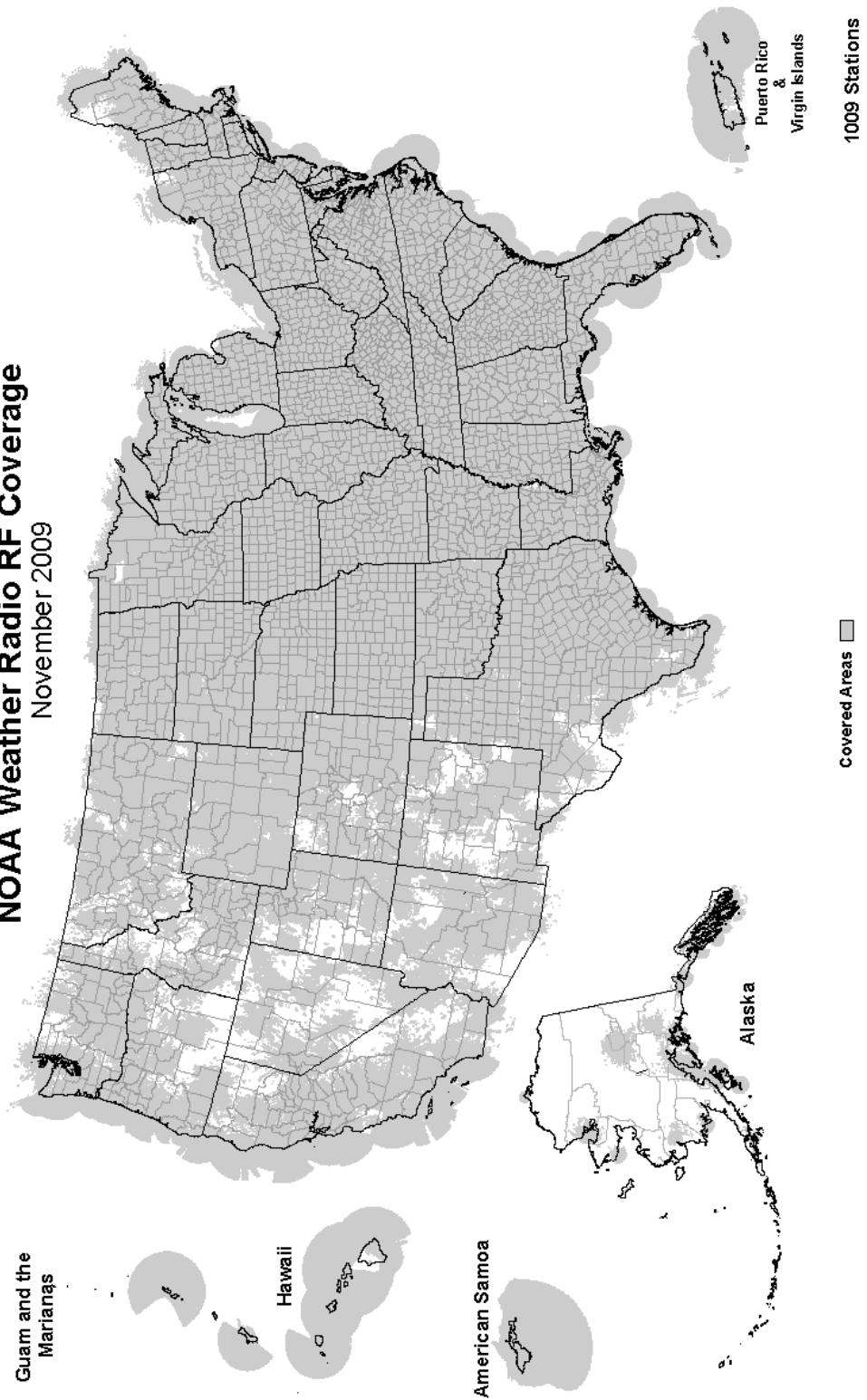
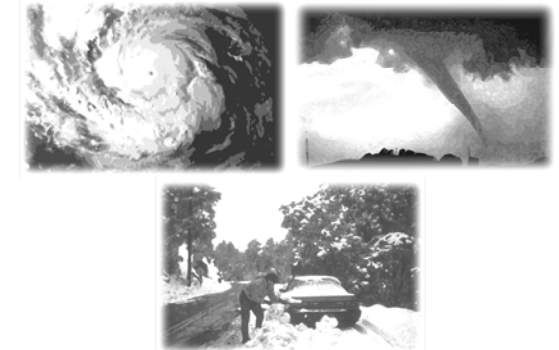


NOAA Weather Radio RF Coverage
November 2009



NOAA/PA 94062
Rev. January, 2010



**The Voice of NOAA's
National Weather Service**

< Over 1000 Transmitters >

**Broadcasting Continuous
Weather Information on the
Following Frequencies:**

- 162.400 MHz
- 162.425 MHz
- 162.450 MHz
- 162.475 MHz
- 162.500 MHz
- 162.525 MHz
- 162.550 MHz

U.S. Department of Commerce
National Oceanic and Atmospheric Administration
National Weather Service

<http://www.nws.noaa.gov/nwr>

NOAA WEATHER RADIO

The Voice of NOAA's National Weather Service

<http://www.nws.noaa.gov/nwr>

NOAA Weather Radio is a service of the National Oceanic and Atmospheric Administration (NOAA) of the U.S. Department of Commerce. As the "voice of the National Weather Service," it provides continuous broadcasts (24 hours a day) of the latest weather information from local National Weather Service offices. Weather messages are repeated every 4 to 6 minutes and are routinely updated every 1 to 6 hours or more frequently in rapidly changing local weather or if a nearby natural hazardous or manmade condition exists.



The regular broadcasts are specifically tailored to weather information needs of the people within the service area of the transmitter. For example, in addition to general weather information, stations in coastal areas provide information of interest to mariners. Other specialized information, such as hydrological forecasts and other climate data may be broadcast.

During severe weather, National Weather Service forecasters can interrupt the routine weather broadcasts and insert special warning messages concerning imminent threats to life and property. The forecaster can also add special signals to warnings that trigger "alerting" features of specially equipped receivers. In the simplest case, this signal activates audible or visual alarms, indicating that an emergency condition exists within the broadcast areas of the station being monitored, and alerts the listener to turn up the volume and stay tuned for more information. More sophisticated receivers are automatically turned on and set to an audible volume when an alert is received.

In the most sophisticated alerting system, NOAA Weather Radio Specific Area Message Encoding (SAME), digital coding is employed to activate only those special receivers programmed for specific emergency conditions in specific area, typically a county. SAME can activate specially equipped radio and cable television receivers and provide a short text message that identifies the location and type of emergency. SAME is the primary activator for the FCC Emergency Alert System (EAS).

To program NWR SAME receivers with the proper county(s) and marine area(s) of choice, you need to know the 6-digit SAME code number(s) for that county(s). Once you have your code number(s), follow the manufacturer's directions for programming your NWR SAME receiver. You can obtain your SAME code numbers by dialing:

888-NWR-SAME (888-697-7263) – Voice & TTY/TTD Accessible

Under a January 1975 White House policy statement, NOAA Weather Radio was designated the sole Government-operated radio system to provide direct warning into private homes for both

Maricao162.550
San Juan162.400

RHODE ISLAND

Providence162.400

SOUTH CAROLINA

Aiken162.450
Aynor162.400
Barnwell162.500
Beaufort162.450
Charleston162.550
Cheraw162.450
Columbia162.400
Cross162.475
Florence162.550
Georgetown162.500
Greenville162.550
Jasper County162.400
Kirksey162.425
Orangeburg162.525
Rock Hill162.425
Sumter162.425

SOUTH DAKOTA

Aberdeen162.475
Arlington162.525
Faith162.475
Firesteel162.425
Hot Springs162.425
Lead162.525
Lowry162.500
Mitchell162.450
Philp162.450
Pickstown162.425
Pierre162.400
Porcupine162.500
Rapid City162.550
Reliance162.525
Sioux Falls162.400
South Shore162.425
Wessington162.550
White River162.550

TENNESSEE

Bristol162.550
Centerville162.450
Chattanooga162.550
Clarksville162.500
Clifton162.500
Cookeville162.400
Dyersburg162.500
Hickman162.500
Jackson162.550
Knoxville162.475
La Follette162.450
Lafayette162.525
Lawrenceburg162.425
Lobelville162.525
Memphis162.475
Nashville162.550
Shelbyville162.475
Spencer162.450
Vale162.450
Waverly162.400
Winchester162.525

TEXAS

Abilene162.400
Alpine162.550
Amarillo162.550
Austin162.400

Bay City162.425
Beaumont162.475
Big Spring162.475
Borger162.400
Brownsville162.550
Bryan162.550
Burkeville162.425
Carrizo Springs162.550
Center162.525
Childress162.525
Cisco162.500
Coleman162.475
Corpus Christi162.550
Corsicana162.525
Crowley / Fort Worth162.550
Cumbo162.500
Dallas162.400
Del Rio162.400
D'Hanis162.525
Dickens162.500
Dilley162.500
El Paso162.475
El Paso Spanish162.550
Galveston162.550
Gilmer162.425
Gonzales162.525
Guadalupe Mt. Nal. Park162.525
Houston162.400
Junction162.475
Kerrville162.450
La Grange162.500
Laredo162.550
Llano162.425
Lubbock162.400
Lufkin162.550
Marietta162.525
Miami162.450
Midland/Odessa162.400
Milano162.525
Mineral Wells162.525
Muenster162.425
New Taiton162.450
Onalaska162.500
Ozona162.500
Palestine162.450
Paris162.550
Pecos162.450
Perryton162.475
Pharr162.400
Plainview162.450
Port O'Connor162.475
Richland Springs162.525
Rio Grande City162.425
Riviera162.525
San Angelo162.550
San Antonio162.550
Seguin162.475
Seminole162.425
Sherman162.475
Stephenville162.450
Summerfield162.500
Sweetwater162.425
Texarkana162.550
Three Rivers162.450
Throckmorton162.425
Tyler162.475
Uvalde162.425
Victoria162.400
Waco162.475
Wichita Falls162.475

UTAH

Bear Lake162.500
Castle Dale162.500
Coalville/ Park City162.475
Escalante162.425
Lake Powell162.550
Logan162.400
Manti162.425
Milford/Cedar City162.400
Moab162.475
Monticello162.450
Salt Lake City162.550
St. George162.475
Tabiona162.550
Tooele (South Mountain)162.450
Tooele (Vernon Hills)162.525
Vernal162.400
Wendover162.475

VERMONT

Burlington162.400
Castleton162.500
Marlboro162.425
St. Johnsbury162.425
Windsor162.475

VIRGIN ISLANDS

St. Croix162.500

VIRGINIA

Coveseville162.450
Fredericksburg162.425
Heathsville162.400
Lynchburg162.550
Manassas162.550
Norfolk162.550
Richmond162.475
Roanoke162.475
South Boston162.525

WASHINGTON

Astoria162.400
Cle Elum162.400
Davis Peak162.525
Dayton162.525
Forks162.425
H Street - Blaine Area162.525
Neah Bay162.550
Okanogan162.525
Olympia162.475
Plymouth162.425
Puget Sound Marine162.425
Randle162.425
Richland162.450
Seattle162.550
Spokane162.400
The Dalles162.400
Wenatchee162.475
Yakima162.550

WEST VIRGINIA

Backbone Mountain162.450
Beckley162.550
Charleston162.400

Clarksburg162.550
Garfield162.500
Gilbert162.475
Greggs Knob162.500
Hinton162.425
Monterville162.525
Moorefield162.400
Morgantown162.475
Sutton162.450

WISCONSIN

Ashland162.525
Baraboo162.450
Black River Falls162.500
Coloma162.400
Crandon162.450
Dubuque162.400
Fond Du Lac162.500
Green Bay162.550
Janesville162.425
Ladysmith162.550
Madison162.550
Menomonie162.400
Milwaukee162.400
New London162.525
Park Falls162.500
Prairie Du Chien162.500
Racine162.450
Rhinelander162.400
Richland Center162.475
Sheboygan162.525
Sister Bay162.425
Spooner162.475
Wausau162.475
Wausaukee162.400
Winona162.425
Winthee162.425

WYOMING

Afton162.425
Casper162.400
Cheyenne162.550
Cody162.400
Dubois162.450
Elk Plaza162.425
Evanston162.450
Gillette162.500
Glendo162.450
Grant Village162.450
Jackson162.525
Kaycee162.550
Kemmerer162.525
Lander162.475
Newcastle162.475
Pinedale162.500
Rawlins162.425
Rock Springs162.550
Sheridan162.475
Thermopolis162.500
Worland162.525

As of January 2010, NOAA is operating 1011 stations.

To better serve the community, the National Weather Service requests your assistance in reporting any outages of NOAA Weather Broadcast Stations.

Please use our Toll Free Number (888) 886-1227 or send an Email to nwroutage@noaa.gov to report the outage.

Doniphan	162.450	Scottsbluff	162.475
El Dorado Springs.....	162.475	Shubert	162.500
Fredericktown	162.500	Sidney	162.500
Gainesville	162.425	Superior	162.525
Hannibal.....	162.475	Trenton	162.500
Hermitage.....	162.450	Valentine.....	162.450
Jamestown.....	162.425	Yankton	162.500
Joplin	162.425		
Kahoka.....	162.450		
Kansas City.....	162.550		
La Plata.....	162.525		
Lancaster.....	162.550		
Maryville.....	162.425		
Neosho	162.450		
Piedmont.....	162.425		
Springfield.....	162.400		
St. Louis.....	162.550		
Summersville	162.475		
Trenton	162.500		
Wardell.....	162.525		
West Plains	162.525		

MONTANA

Baker	162.550	NEW HAMPSHIRE	
Belgian Hill.....	162.500	Clarksville	162.400
Billings	162.550	Concord	162.400
Bozeman	162.500	Deerfield	162.450
Broadus	162.425	Hanover	162.525
Browning.....	162.525	Holderness.....	162.550
Butte	162.550	Mt. Washington.....	162.500
Circle	162.550	Pack Monadnock	162.525
Dillon.....	162.475		
Forsyth.....	162.525	NEW JERSEY	
Glasgow.....	162.400	Atlantic City.....	162.400
Glendive.....	162.475	Hardyston	162.500
Glentana	162.525	Southard	162.450
Great Falls	162.550		
Hardin	162.450	NEW MEXICO	
Havre	162.400	Albuquerque	162.400
Helena	162.400	Artesia	162.425
Jordan.....	162.500	Carlsbad	162.475
Kalispell	162.550	Clovis	162.475
Lewistown	162.500	Des Moines.....	162.550
Livingston.....	162.525	Farmington.....	162.475
Malta	162.475	Hobbs	162.400
Miles City	162.400	Las Cruces.....	162.400
Missoula.....	162.400	Roswell	162.450
Plentywood	162.475	Ruidoso	162.550
Poplar	162.425	Santa Fe	162.550
Ryegate	162.450	Silver City.....	162.425
Scobey.....	162.450		
Winnett.....	162.400		

NEBRASKA

Albion.....	162.500	NEW YORK	
Bassett.....	162.475	Albany.....	162.550
Beatrice.....	162.450	Binghamton.....	162.475
Cambridge	162.525	Buffalo	162.550
Chadron	162.525	Call Hill	162.425
Columbus.....	162.450	Cattaraugus	162.425
Grand Island	162.400	Cooperstown.....	162.450
Holdrege	162.475	Elmira	162.400
Lexington	162.450	Frewsburg.....	162.525
Lincoln	162.475	Gore Mtn.....	162.450
Merna	162.500	Highland	162.475
Merriman.....	162.400	Ithaca.....	162.500
Mullen	162.425	Middleville	162.425
Norfolk	162.550	Mt. Washington.....	162.450
North Platte.....	162.550	New York City	162.550
Omaha.....	162.400	Norwich.....	162.525
Ord.....	162.525	Riverhead.....	162.475
Oshkosh.....	162.525	Rochester	162.400
		Spencerport	162.525
		Stamford	162.400
		Syracuse.....	162.550

Walton	162.425
Watertown.....	162.475
Whites Hill.....	162.525

NORTH CAROLINA

Asheville	162.400
Buck Mountain.....	162.500
Cape Hatteras	162.475
Chapel Hill	162.550
Charlotte	162.475
Ellerbe	162.400
Garner	162.450
Henderson	162.500
Linville	162.450
Mamie	162.425
Margaretsville	162.450
Mooreville	162.525
Mount Jefferson	162.500
New Bern	162.400
Robbinsville	162.525
Rocky Mount.....	162.475
Saint Pauls	162.475
Warsaw	162.425
Windsor	162.525
Winnabow	162.550
Winston-Salem	162.400

NORTH DAKOTA

Bismarck.....	162.475
Cavalier	162.450
Dickinson	162.400
Fargo	162.475
Fort Ransom.....	162.525
Grand Forks.....	162.475
Jamestown	162.550
Langdon	162.525
Minot.....	162.400
New Town.....	162.525
Petersburg.....	162.400
Rolla	162.475
Scranton	162.525
Sheyenne	162.525
Steele	162.400
Webster	162.425
Williston	162.550
Willow City.....	162.450

NORTHERN MARIANA ISLANDS

Saipan	162.550
--------------	---------

OHIO

Akron	162.400
Athens	162.425
Bridgeport	162.525
Carey	162.525
Chillicothe	162.500
Cleveland	162.550
Columbus	162.550
Dayton	162.475
Grafton	162.500
High Hill	162.475
Lima.....	162.400
Mansfield	162.450
Marietta	162.400
New Philadelphia	162.425
Otway	162.525
Sandusky	162.400
Toledo	162.500
Youngstown	162.500

OKLAHOMA

Altus	162.425
-------------	---------

Antlers	162.400
Ardmore.....	162.525
Atoka	162.500
Bartlesville	162.425
Broken Bow	162.450
Chickasha	162.450
Clinton	162.525
Enid.....	162.475
Grove.....	162.500
Guymon.....	162.500
Lawton.....	162.550
McAlester	162.475
Oklahoma City	162.400
Oktaha.....	162.525
Ponca City	162.450
Stillwater.....	162.500
Tulsa.....	162.550
Wewoka.....	162.550
Woodward	162.500

OREGON

Bend/Redmond.....	162.500
Brookings	162.550
Burns Butte.....	162.475
Cape Blanco.....	162.425
Coos Bay.....	162.400
Eugene	162.400
Florence	162.500
Fossil.....	162.550
Heppler.....	162.425
Heppler2.....	162.425
John Day.....	162.500
Klamath Falls.....	162.550
Medford	162.400
Mt Hebo.....	162.525
Mt. Ashland	162.475
Neahkahnie	162.425
Newport	162.550
Pendleton	162.425
Rolla	162.550
Reedsport.....	162.525
Roseburg.....	162.550
Salem	162.475
Spout Springs.....	162.400
Tillamook	162.475
Umatilla	162.500

PENNSYLVANIA

Allentown.....	162.400
Altoona	162.425
Clearfield	162.550
Coudersport.....	162.500
Erie	162.400
Harrisburg.....	162.550
Hibernia Park.....	162.425
Honesdale	162.450
Huntingdon	162.525
Johnstown	162.400
Meadville	162.475
Parker	162.425
Philadelphia.....	162.475
Pittsburgh.....	162.550
Punxsutawney	162.500
State College.....	162.475
Towanda	162.525
Warren	162.450
Wellsboro	162.475
Wilkes-Barre	162.550
Williamsport.....	162.400

PUERTO RICO

Culebra.....	162.450
--------------	---------

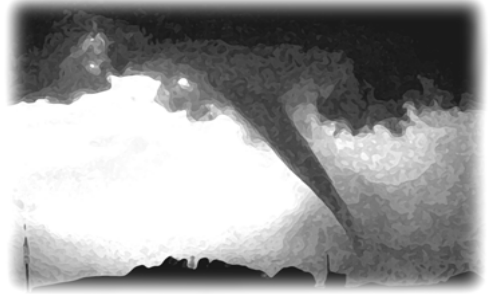
natural disasters and nuclear attack. This concept has been expanded to include warnings for all hazardous conditions that pose a threat to life and safety, both at a local and national level. As a result, NOAA Weather Radio is being better integrated with other National Weather Service systems to provide state and local emergency managers and other warning providers better access to local weather forecast offices, allowing hazard warnings of all types to be broadcast on NOAA Weather Radio within seconds

NOAA Weather Radio currently broadcasts from 1011 stations in fifty states, Puerto Rico, the U.S. Virgin Islands, American Samoa, Guam, and Saipan on seven frequencies in the VHF band, ranging from 162.400 to 162.550 megahertz (MHz). These frequencies are outside the normal AM or FM broadcast bands.

Special radios that receive only NOAA Weather Radio, both with and without special alerting features, are available from numerous manufacturers. In addition, other manufacturers are including NWR capability in a variety of receivers. NOAA Weather Radio capability is currently available on automobile, aircraft, marine, citizens band, and standard AM/FM radios as well as communications receivers, transceivers, scanners, and cable TV.

By nature and design, NOAA Weather Radio coverage is limited to an area within 40 miles of the transmitter. The quality of reception is dictated by transmitter distance, local terrain, and the quality and location of the receiver. In general, those using a high quality receiver on flat terrain or at sea can expect reliable reception beyond 40 miles. Those with standard receivers, surrounded by large buildings in cities and those in mountain valleys may experience little or no reception at considerably less than 40 miles. If possible, a receiver should be tested in the location where it will be used prior to purchase.

NOAA Weather Radio is directly available to a large portion of the U.S. population. The National Weather Service is currently engaged in a program to increase coverage to at least 95 percent of the population.



If you have a question regarding the technical aspects of NOAA Weather Radio such as transmitter location, reception, and characteristics or if you are interested in becoming a partner with the National Weather Service to identify or provide local funding and/or facilities for the installation of a NOAA Weather Radio transmitter, please contact your local National Weather Service Office or send a letter to:

National Weather Service
 Attn: Dissemination Systems Branch, W/OPS17
 1325 East-West Highway
 Silver Spring, MD 20910

The following is a listing of operational stations by state. For specific coverage information for your local area please visit our website at:

<http://www.nws.noaa.gov/nwr>

ALABAMA

Anniston	162.475
Arab	162.525
Auburn	162.525
Birmingham	162.550
Brewton	162.475
Columbus	162.400
Cullman	162.450
Demopolis	162.475
Dozier	162.550
Florence	162.475
Greenville	162.425
Henagar	162.500
Huntsville	162.400
Jackson	162.500
Louisville	162.475
Mobile	162.550
Montgomery	162.400
Oneonta	162.425
Selma	162.450
Tuscaloosa	162.400
Winfield	162.525

ALASKA

Althorp Peak	162.425
Anchorage	162.550
Barrow	162.550
Bede Mountain	162.450
Bethel	162.550
Cape Fanshaw	162.425
Cape Gull	162.500
Cape Hinchinbrook	162.525
Cold Bay	162.425
Cordova	162.400
Craig	162.475
Dillingham	162.500
Duke Island	162.450
East Point	162.500
Fairbanks	162.550
Glennallen	162.550
Gravina Island	162.525
Haines	162.400
Homer	162.400
Juneau	162.550
Ketchikan	162.550
Kodiak	162.550
Kotzebue	162.550
Manleyville	162.500
Marmot Island	162.500
Mt. McArthur	162.525
Mt. Robert Barron	162.450
Nenana	162.400
Ninilchik	162.550
Nome	162.550
Pillar Mtn.	162.525
Point Pigot	162.450
Potato Point	162.425
Raspberry Island	162.425
Rugged Island	162.425
Saint Paul Island	162.525
Sand Point	162.550
Seward	162.550
Sitka	162.550

Sitkinak Dome	162.450
Soldotna	162.475
Sukkwana Island	162.425
Tripod Hill	162.450
Tuklung Mtn.	162.425
Unalaska	162.550
Valdez	162.550
Wasilla	162.400
Whittier	162.475
Wrangell	162.400
Yakutat	162.400
Zarembo Island	162.450

AMERICAN SAMOA

Mt. Oloetele	162.550
Pago Pago	162.400

ARIZONA

Flagstaff	162.400
Globe Gila County S.....	162.500
Grand Canyon	162.475
Greer	162.525
Kingman	162.425
Lake Havasu	162.400
Nogales	162.500
Payson Gila County N.	162.425
Phoenix	162.550
Prescott	162.525
Safford	162.550
Show Low	162.400
Tucson	162.400
Window Rock	162.550

ARKANSAS

Cherokee Village	162.475
El Dorado	162.525
Fayetteville	162.475
Fort Smith	162.550
Fountain Hill	162.475
Gurdon	162.475
Harrison	162.525
Jonesboro	162.550
Little Rock	162.550
Marvell	162.525
Mena	162.400
Morrilton	162.475
Mount Ida	162.425
Mountain View	162.450
Russell	162.400
Russellville	162.525
Springdale	162.400
Star City	162.400
Yellville	162.500

CALIFORNIA

Avalon	162.525
Bakersfield	162.550
Big Rock Ridge	162.500
Coachella	162.400
Coachella / Spanish	162.525
Contra Costa County	162.425
Conway Summit	162.525
Nome	162.425
El Paso Mtns.	162.425
Eureka	162.400
Fresno	162.400
Grass Valley	162.400
Los Angeles	162.550
Monterey	162.550
Monterey Marine	162.450
Point Arena	162.550
Redding	162.550
Sacramento	162.550

San Diego	162.400
San Diego Marine	162.425
San Francisco	162.400
San Luis Obispo	162.550
San Simeon	162.525
Sandberg	162.400
Santa Ana	162.450
Santa Barbara	162.400
Santa Barbara Marine	162.475
Sonoma County	162.475
Ukiah	162.525
Victorville	162.500
Yosemite	162.450
Yuma	162.550

COLORADO

Alamosa	162.425
Anton	162.450
Bethune	162.525
Boyero	162.450
Canon City	162.500
Colorado Springs	162.475
Deer Trail	162.500
Denver	162.550
Dillon	162.400
Durango	162.425
Fort Collins/Ault	162.450
Fort Morgan	162.525
Fowler	162.425
Franktown	162.450
Glenwood Springs	162.500
Grand Junction	162.550
Greeley	162.400
La Junta	162.500
Lamar	162.525
Mead/Longmont	162.475
Montrose	162.450
Pueblo	162.400
Springfield	162.400
Steamboat Springs	162.525
Sterling	162.400
Walsenburg	162.450
Wray	162.475

CONNECTICUT

Cornwall	162.500
Hartford	162.475
Meriden	162.400
Russell	162.550

DELAWARE

Lewes	162.550
Salisbury	162.475

DISTRICT OF COLUMBIA

Washington DC	162.450
---------------------	---------

FLORIDA

Belle Glade	162.400
Daytona Beach	162.400
East Point	162.500
Fort Myers	162.475
Fort Pierce	162.425
Gainesville	162.475
Inverness	162.400
Jacksonville	162.550
Key West	162.400
Lake City	162.400
Largo	162.450
Melbourne	162.550
Miami	162.550
Morrison	162.550

Naples	162.525
Ocala	162.525
Orlando	162.475
Palatka	162.425
Panama City	162.550
Pensacola	162.400
Princeton	162.425
Salem	162.425
Sebring	162.500
Sneads	162.425
Sumterville	162.500
Tallahassee	162.400
Tampa Bay	162.550
Tea Table Key	162.450
Venice	162.400
West Palm Beach	162.475
Westville	162.450

GEORGIA

Americus	162.425
Ashburn	162.450
Athens	162.400
Atlanta	162.550
Augusta	162.550
Baxley	162.525
Blakely	162.525
Blue Ridge	162.475
Brasstown Bald	162.500
Brunswick	162.425
Buchanan	162.425
Chatsworth	162.400
Clayton	162.450
Cleveland	162.525
Eastman	162.400
Eatonton	162.525
Jesup	162.450
La Grange	162.450
Macon	162.475
Metter	162.425
Pelham	162.550
Sandersville	162.450
Summerville	162.450
Thomaston	162.500
Toccoa	162.425
Valdosta	162.500
Washington	162.500
Waycross	162.475
Waynesboro	162.425

GUAM

Guam	162.400
------------	---------

HAWAII

Hawaii Kai	162.400
Kauai	162.400
Kulani Cone	162.550
Mau	162.400
Oahu	162.550
South Point	162.550

IDAHO

Boise	162.550
Bonnors Ferry	162.500
Burley	162.475
Driggs	162.450
Grangeville	162.450
Lewiston	162.550
McCall	162.475
Payette	162.400
Pocatello	162.550
Salmon	162.500
Sedgwick Peak	162.425

Sun Valley	162.450
Twin Falls	162.400

ILLINOIS

Bloomington	162.525
Champaign	162.550
Chester	162.450
Chicago	162.550
Crecent City	162.500
Crystal Lake	162.500
DeKalb	162.550
Dixon	162.525
Freeport	162.450
Galesburg	162.400
Hillsboro	162.425
Jacksonville	162.525
Jerseyville	162.450
Kankakee	162.525
Lockport	162.425
Macomb	162.500
Marion	162.425
McLeansboro	162.400
Newton	162.450
Odell	162.450
Paris	162.525
Peoria	162.475
Plano	162.400
Princeton	162.425
Quad Cities	162.550
Rockford	162.475
Salem	162.475
Shelbyville	162.500
Springfield	162.400

INDIANA

Angola	162.425
Bloomington	162.450
Edwardsport	162.425
Evansville	162.550
Fort Wayne	162.550
Georgia	162.500
Hebron	162.450
Indianapolis	162.550
Marion	162.450
Michigan City	162.500
Monticello/Lafayette	162.475
Muncie	162.425
New Albany	162.475
Newport	162.425
North Webster	162.500
Putnamville	162.400
Richmond	162.500
Seymour	162.525
South Bend	162.400

IOWA

Burlington	162.525
Carroll	162.425
Cedar Rapids	162.475
Decorah	162.525
Denison	162.550
Des Moines	162.550
Essex	162.550
Fairfield	162.400
Forest City	162.500
Fort Dodge	162.400
Hancock/Pottawattam	162.525
Iowa Falls	162.525
Lake Rathbun	162.425
Lenox	162.400
Manchester	162.450
Maquoketa	162.425

Marshalltown	162.500
Milford	162.550
Montezuma	162.450
Ottumwa	162.500
Ringsted	162.475
Sanborn	162.525
Sioux City	162.475
St. Ansgar	162.450
Storm Lake	162.450
Van Wert	162.475
Waterloo	162.550

KANSAS

Abilene	162.525
Beaumont	162.500
Belvidere	162.525
Blue Rapids	162.425
Chanute	162.400
Concordia	162.550
Dighton	162.525
Dodge City	162.475
Ellsworth	162.400
Gem	162.400
Great Bend	162.500
Halls Summit	162.425
Hays	162.450
Kirwin	162.500
Lenora	162.425
Meade	162.425
Parker	162.525
Saint Joseph	162.400
Sharon	162.400
Topeka	162.475
Tribune	162.550
Ulysses	162.450
Wichita	162.550

KENTUCKY

Ashland	162.550
Beattyville	162.500
Bowling Green	162.400
Burkesville	162.475
Campbellsville	162.525
Covington	162.550
East Madison County	162.525
Ekron	162.450
Elizabethtown	162.550
Frankfort	162.500
Frenchburg	162.475
Harlan	162.450
Hazard	162.475
Hopkinsville	162.450
Horse Cave	162.500
Irvine	162.475
Jackson	162.425
Lexington	162.400
London	162.475
Madison County	162.525
Madisonville	162.525
Manchester	162.400
Mayfield	162.475
Maysville	162.425
McKee	162.450
Mount Pleasant	162.425
Morehead	162.425
Mount Vernon	162.425
Owenton	162.450
Paintsville	162.525
Phelps	162.500
Pikeville	162.400
Pineville	162.525
Somerset	162.550

Stanton	162.550
West Liberty	162.450
West Madison County	162.525
Whitesville	162.475
Williamsburg	162.500

LOUISIANA

Alexandria	162.475
Baton Rouge	162.400
Bogalusa	162.525
Buras	162.475
Lafayette	162.550
Lake Charles	162.400
Monroe	162.550
Morgan City	162.475
Natchitoches	162.500
New Orleans	162.550
Shreveport	162.400

MAINE